



Welcome to Callaghan College Waratah Campus

Year 7 Orientation Handbook
for students and their families

Collaborating to
empower learners



Principal's Welcome



It is my pleasure to welcome you to Callaghan College Waratah

We have a wonderful and vibrant learning community, who pride ourselves on being inclusive, curious about the world and globally aware.

Our mission is to grow our students into confident and creative learners who are ready to be active and involved members of our wider community.

There are many reasons to be excited about the move from primary to high school and I encourage you all to make the most of all the opportunities available here at Callaghan College.

Our team of caring and experienced staff will be here to support you through the transition and to help you realise your academic and extra-curricular goals.

I look forward to meeting you personally and following your journey through high school.

Hayley Macdonald
Principal, Callaghan College Waratah Campus



What it means to be part of Callaghan College

Welcome to your Callaghan College learning community. Our College provides outstanding educational opportunities for Year 7 to Year 12 students across the unique learning environment of three campuses - Waratah, Wallsend and our senior campus at Jesmond. Our College motto is Collaborating to Empower Learners with all three campuses working together to tailor an educational pathway that meets your current and future learning needs and aspirations.

Every student at Callaghan is known, valued and cared for. There are a world of opportunities which await you at Callaghan and your learning experience will provide a diverse and personalised approach which will see you thrive in secondary schooling. Our expert staff are excited to welcome you and share their passion for learning along with you.

We are delighted to welcome you to Callaghan College and look forward to working with you on your learning journey.

Roger Macey
College Principal, Callaghan College

Contents

Principal's Welcome	1	Support for learning	20
Key dates.....	2	Getting involved in school life	22
Getting started.....	3	Getting involved in sport	24
Getting ready for high school.....	4	Wellbeing	26
My first week of high school.....	6	School values.....	28
What do I wear?	8	Assembly schedule.....	29
Our school routine	10	Getting in touch.....	30
Finding my way	11	Parent information	32
Getting set up for learning	12	Keep up to date	33
Stationery and resources.....	13	Frequently asked questions.....	34
Getting into learning	14	Reading your timetable.....	36
Assessments	18	School maps	38
Progress reports	19	Notes	39

Key dates

Tuesday 31st January:	Day 1 for Year 7 only
Wednesday 1st February:	Year 8-10 return for 2023
Monday 13th February:	Year 7 Family Welcome and Information Evening
Thursday 23rd February:	Year 7 Photos
Monday 20th - Wednesday 22nd March:	Year 7 Camp
Wednesday 15th - Monday 27th March:	NAPLAN 2023

* Please be aware that some of our scheduled community events maybe cancelled or modified based on the most up-to-date COVID-19 guidelines for schools from the NSW Department of Education.



Getting started



Year Advisor's Welcome

As your 2023 Year Advisors, we are very excited about welcoming you to your first day of high school on Tuesday 31 January 2023 and supporting you on your journey from Year 7 to Year 10.

Our aim is to make the transition from primary to high school as smooth as possible for every student.

We realise that many of you will have lots of questions, like "where do I need to go on my first day?", "What do I wear?", "What should I pack?" or "What do I do if I get lost?".

The purpose of this booklet is to answer

many of these questions, support you to get used to the new school routine and help you get off to a great start here at Callaghan College Waratah Campus.

We encourage families to go through this booklet together and practice some of the new routines. Please contact the school if you have any further questions (see page 30 for our key contact list).

Welcome to Year 7!

Anna Milat

Year 7 Advisor, English Teacher

Chris Ellul

Year 7 Advisor, Science Teacher

Deputy Principal's Welcome

I'm so happy to welcome Year 7 students and their families to Callaghan College Waratah Campus! This is an exciting place to learn and grow as a student and take an increasingly active role in our community.



We know that entering a new year group with over 200 students maybe stirring up a lot of emotions. I bet some of you can't wait to meet people, while others of you may be a little anxious. To help everyone get off to a great start we spend the first four days of the school year engaging in the Connection Point program. This is a fun, year group boot camp focused on cultivating empathy and teamwork and helping each of you understand your influence in creating a vibrant learning culture.

I am looking forward to meeting you all!

Tips to help you thrive in your new school routine

A new Callaghan Waratah uniform was launched in 2022 with lots of options to suit all different activities and weather conditions. Make sure you come to school each day in your uniform and ready to achieve your best.

- ## What to pack

- ## What to leave at home?

- Chewing gum and lollies
- Permanent markers
- Soft drink, high caffeine and energy drinks
- Aerosol deodorants (bring roll-on only)
- Items of clothing that are not uniform
e.g. hoodies
- Medication of any kind that are not registered
with our Administration Office





Getting to and from school safely

- Students who attend our campus travel to school by many different methods including riding their bike, walking, catching a bus or train. You can find information to plan your route to school at transportnsw.info/school-students
- Apply for a school Opal card if travelling by bus or train. Go to transportnsw.info/school-travel-apply or phone 131500
- Obey transport rules and our public transport code of conduct and present as a positive Callaghan College citizen
- Have an emergency plan if transport is disrupted or delayed
- Remember home and parent phone numbers (mobile phones can get lost)
- If catching the train, please walk between the station and school grounds via the pathway through Waratah Park
- If coming by car, drop off and pick up locations are Young or Harris Street, or the back of the school near Waratah Park
- Bikes, scooters and skateboards must be secured in the bicycle lock up near the Science staffroom (bring your own chain and padlock) – No riding on school grounds

Finding your way around campus

- Familiarise yourself with the campus map on page 38 of this booklet
- Highlight on your map the locations of the classrooms on your timetable (you will receive your timetable on Day 1)
- Keep to the left in corridors when you're making your way around school
- If you aren't sure where to go, ask another student or staff member for help

School values and expectations

- Speak and listen to adults and peers with respect and politeness
- Respect school facilities and equipment and the Callaghan College environment
- Come to class ready to learn – right equipment and right attitude
- Stay on task and work to the best of your ability
- Keep mobile phones off and away in your bag during class time (unless otherwise directed).

Check out the Year 7 2023 Orientation video series on our website.

My first week of high school

Snapshot of what will happen on your first fortnight

Tuesday 31st January 2023

We commence our school year with Year 7 starting before all other year groups, to allow you to become more familiar with the school and meet the staff before all the other students commence.

Please meet in the hall at 8:50am so we can welcome you, mark the rolls and tell you about the plan for the Connection Point program for your first week of Year 7.

Connection Point

Connection Point is a one week program aimed at helping you make connections and understand your influence in creating a vibrant learning culture.

We will introduce to your teachers, visit your learning spaces, teach you how to use our technology platforms, Sentral and Canvas and show you how to connect with the many support services available on campus. There will also be loads of fun activities to help you get to know your new classmates and peer support leaders.

What to wear and bring

Wear your new school uniform, including comfortable enclosed shoes. You should also bring a pen, your lunch and a water bottle. The canteen will be open during breaktimes for purchases.

The school day finishes at 2.55pm (and 2pm on Wednesdays)

At 2:30pm all Year 7 meet back in the hall on day 1 to receive information about day 2 and the school's end of day procedures.

If you are catching a bus, you will be shown where and how to do this by your teachers. Please remember what bus number you need to catch home so we can show you the right place to wait.

Teachers supervise bus duty every afternoon at the Young St and Turon Rd bus bays only. Some students also access bus stops at High St, Waratah Railway Station and Georgetown Rd. Be aware, that some bus routes have different drop off and pick up points.

Wednesday 1st February 2023

Arrive at school by 8:45am and move promptly to roll call in the hall when the bell rings at 8:50am.

Please sit in alphabetical order in the roll call group you were allocated into on day 1 and Mrs Maher will run you through the plan for day 2 of the Connection Point program. Remember, school finishes at 2pm on Wednesdays.

BUS ETIQUETTE

Stay in the bus bay when waiting for a bus, line up in single file to enter the bus, have your Opal card ready before the bus arrives.

Parent tips:

We encourage parents just to drop your child off on Day 1. The best location for drop off is near the Harris Street entrance (at the back of the school campus). If you intend to pick your child up on Day 1, please inform them where to meet you.

The School Administration Office tends to be very busy on day 1 so we encourage you to pay your school contributions online when you have ready your statement.

If you or your child has any questions before day 1, our Administration Office will be open from 9.30am to 2.30pm from Monday 30 January 2023.

JOIN US AT OUR WELCOME EVENING FOR FAMILIES

Waratah Campus invites all Year 7 parents and carers to attend an information evening on Monday 21 February from 5-6:30pm.

You will have a chance to meet staff in person, hear about learning at Waratah, link into our online communication tools, including Canvas Parents and Sentral Parent Portals, as well as get an opportunity to meet other new parents. Students are welcome to attend with their parent but this is not essential.

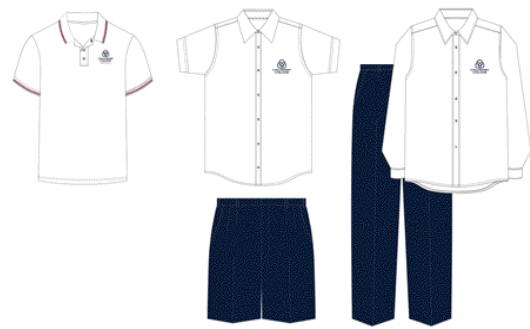
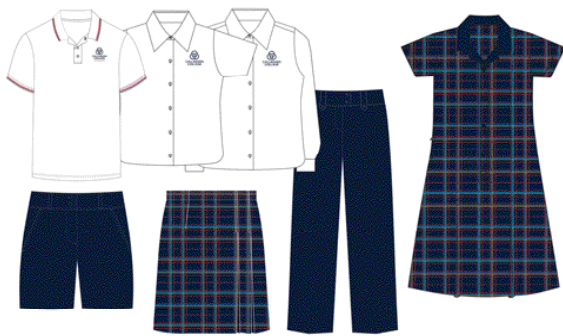
We strongly recommend you attend this session to get off to a good start.



What do I wear?

What we wear shows we care!

A new Callaghan Waratah uniform was launched in 2022, with lots of different options to suit all different activities and weather conditions. Make sure you come to school each day in your uniform and be ready to achieve your best.



Every day uniform

Button up white shirt (short or long sleeve) or white polo shirt with any combination of the following:

- Shorts (male and female cuts in colour ink)
- Long pants (male and female cuts in colour ink)
- Callaghan skirt (wrap around, in tartan)
- Callaghan dress (in tartan)
- V-neck campus jumper (unisex, in colour ink)
- Campus blazer (unisex, in colour ink)
- Callaghan softshell jacket (unisex, in colour ink)
- Black or white socks
- Black leather shoes (must have solid soles and fully enclosed solid uppers to meet Workplace Health and Safety standards in all areas of the school)
- Callaghan cap (ink or plain navy alternative)

Sports uniform

- Polo Shirt Sports – short sleeve, long sleeve (unisex in colour ink with red detail)
- Sports shorts – capri and mid length styles (in colour ink)
- Sports track pants (unisex, in colour ink with red trim)
- Sports shoes / joggers must be worn.

Optional accessories

- Waratah Campus tie
- Callaghan cap
- Callaghan scarf (for hijab or other)

Any undershirts than can be seen must be white or similar. Any jewellery and makeup worn must be safe and discreet. We encourage the wearing of sunscreen and school hat in the playground.

Remember to clearly label all items of your uniform and keep them in good order.



Purchasing your uniform

All our uniform items are sold by The School Locker. They can be ordered online or at The School Locker uniform shop located at The University of Newcastle.

For online purchases, use the QR code opposite.

The University of Newcastle shop -
Shop 1, Floor 2
Shortland Union Building
130 University Drive
CALLAGHAN NSW 2308
0418 588 494



Our campus uniform shop is also open on Wednesdays from 1pm to 4pm. To visit the shop, please enter through our Administration Office.

Our school has a Student Assistance Scheme to assist anyone in financial difficulties as no student (or family) should be disadvantaged by uniform requirements.

Confidential applications can be made using the forms available from the Administration Office, or you can speak to the Year 7 Deputy Principal.

Our school routine

School hours and bell times

The campus timetable operates on a ten-day cycle – Week A (Day 1 – 5) and Week B (Day 6 – 10).

Each school day is broken up into 4 lessons, lunch and 2 x 30 minute breaks.

Every Wednesday there is a whole school assembly immediately after roll call, followed by two periods of sport and two other periods. Staff have their professional learning meetings on Wednesday afternoons so school finishes for students at 2pm.

MON, TUES, THURS, FRI	WED
1 8:50–10:05	Roll Call 8:50–9:00
2 10:10–11:25	Assembly 9:00–9:30
Break 1 11:25–11:55	1 (Sport) 9:30–10:30
3 11:55–13:10	2 (Sport) 10:30–11:30
Break 2 13:10–13:40	Lunch 11:30–12:00
4 13:40–14:55	3 12:00–13:00
	4 13:00–14:00

Bell codes

One short bell: change of period, start/end of lunch/recess, roll call and end of school day.

One short bell, one long ring (repeated 3 times): Lock down.

Continuous bell for 1 minute: evacuation, follow the directions of your teacher.



Start and finish times

School commences at 8:50am with a bell, which signals to students to walk to your period 1 classroom or to roll call on Wednesdays.

Lessons conclude at 2:55pm on every day except Wednesday when it finishes at 2pm.

Supervision is available from 8:20am until the final bell each school day. You should not be on the school grounds outside these hours unless participating in an approved school activity.

If you are late to school or your parents are visiting the school during school hours, you need to report to the Administration Office via the main school entrance on Turton Rd.

Toilets and changing rooms

Student toilet blocks are located near the multi-purpose hall.

Students are encouraged to use the toilet facilities during breaks.

If you need to use the toilets between periods or during lessons, you need to ask your teacher for permission, then check in at the Administration Office with a note. The staff in the office will give you the key to access the toilet.



Finding my way

One of the most common fears about starting Year 7 is not being able to find a classroom. We recommend you check out the map on page 38 before your first day and bring it to school with you for the first few weeks. Orientating yourself to any new environment takes time, but there's lots of people on hand to help you find your way. If you're not sure where you should be, just ask a teacher or another student. In term 1 your Peer Support Leaders will guide you to your classes if you get lost.

Canteen

Our canteen sells a variety of hot and cold meals as well as drinks and snacks.

You have the option of pre-ordering before school or making a purchase during recess and lunch breaks. EFTPOS is available. A complete price list can be found on our website.

Canteen etiquette

Line up outside the canteen and wait for the supervising teacher to advise you when to enter. You need to leave your bag outside. Once inside, just select what you wish to purchase and make payment with the canteen staff.

Library

Our Library is open every school day between 8:30am–3:00pm, with students welcome during recess and lunch. All resources are available to the students, including the library computers (with internet access via your student login), books, audio visual resources (bring your own headphones), cards and board games.

Students can borrow up to 4 items at a time for 2 weeks. You can also access Oliver (My Library) catalogue from any networked computer using your Department of Education student login.

Our library provides students the opportunity to access a free online homework assistance program, My Tutor and other free services through Newcastle Regional Public Library system (you'll need to fill out and return the Newcastle Library Membership application included in your Orientation Pack).

Printing services are available from library computers for a small cost.

LIBRARY ETIQUETTE

Students must line up in an orderly fashion outside the library until your teacher arrives.

Bags are to be left on the bag racks provided

Mobile phones and portable music players are not welcome in the library.



Getting set up for learning

Laptops for learning

All Year 7 students need to bring a laptop to school to support your learning. It doesn't need to be fancy. It just needs to meet the below requirements.

You will also need to sign and return the Laptops for Learning User Agreement (emailed to families) before we can connect your laptop to our school's wireless network.

Please don't worry about purchasing additional software as there is free software available from the department for you to download.

Is my device suitable for learning?

- Wireless connectivity (must be able to connect to a 5 ghz dual band wireless network, which is 802.11ac)
- Most recent operating system available (or the preceding version)
- Apple, PC or Chromebook
- A minimum 4GB RAM (8GB preferred) and 250GB hard drive
- 11.4 inch screen or above, with sturdy keyboard for continuous use throughout the day
- Minimum 6 hours battery life (you are responsible for charging your own device)
- Sturdy case and consider weight of device as you will have to carry it around all day.



What about mobile phones?

Mobile Phones and other personal devices need to be on silent and in your bag during learning time (unless otherwise directed by your teacher).

These devices can be very valuable, and as with other personal belongings, you are responsible for their safe keeping. The school does not accept responsibility for these items.

DEVICES AND THE LAW

There are laws which govern the recording of sound and vision and students are not to record at any time whilst on the school premises or on a school activity without permission of a teacher.



Stationery and resources

Text books and equipment required for Year 7

ITEM / SUBJECT	PACK	ITEM / SUBJECT	PACK
English		Maths	
1 x 128 page A4 book with margin	●	2 x 96 page A4 Grid book 5mm	●
1 x 48 page exercise book	●	1 x Casio fx-82AU Plus2 calculator	●
2 x highlighters (different colours)	●	1 x 30cm ruler	●
Science		Language	
1 x 128 page A4 book with margin	●	1 x 128 page A4 book with margin	●
History		Visual Arts	
1 x 96 page A4 book	●	1 x A3 school VA diary (white)	●
1 x display folder (20 pocket)	●	1 x HB or 2B lead pencil	
Geography		Music	
1 x 96 page A4 book	●	1 x 96 page A4 exercise book	●
1 x display folder (20 pocket)	●	1 x headphones/earphones	
1 x protractor 360°	●	Design and Technology	
PD/Health/PE		1 x A4 display folder (Black)	●
1 x PD/H/PE activity workbook (provided by PDHPE)		1 x apron	●
PE shirt and shorts (Lowes, Jesmond)		2 x hair nets	●
Lace up joggers		1 x safety glasses	●
Water bottle		Packs available from Stuart and Dunn Office Choice. Order online https://stuartanddunn.officechoice.com.au/booklist School code is CCWT and Password is bts123. Select Year 7 from the drop down menu.	PACK TOTAL \$98.22
Portfolio			
1 x A4 3 ring binder (25mm spine) with 40 plastic sleeves			

EVERY DAY SCHOOL BAG ITEMS - STATIONERY AND EQUIPMENT			
1 x scissors		1 x calculator	●
1 x pencil case		1 x 8GB USB	●
2 x blue or black pens	●	1 x 30 cm ruler	●
1 x red pen	●	1 x pkt 12 coloured pencils	
1 x HB and 2B pencil		1 x glue stick	
1 x small sharpener		1 x soft eraser	

Getting into learning

Our education philosophy

Here at Waratah Campus we are creating a vibrant learning culture where confident and creative students thrive.

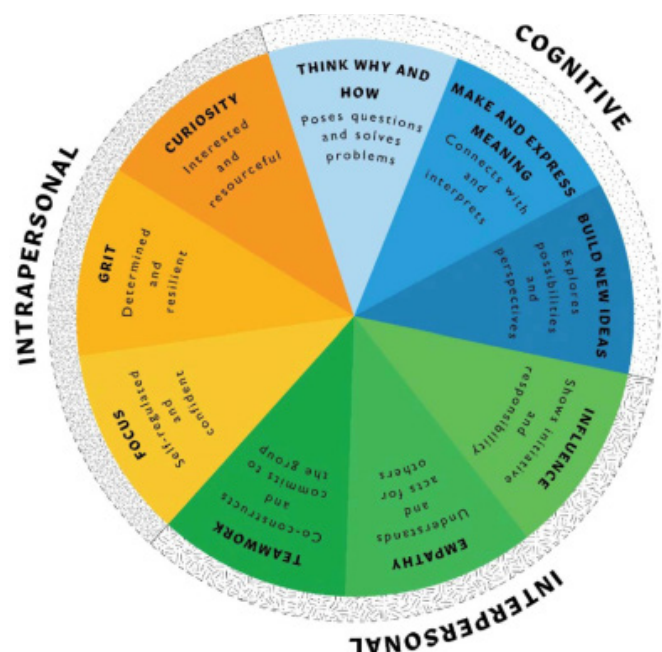
Our goal is deep learning enabled by creativity, critical reflection, communication, and collaboration (this is known as the 4C pedagogy).

Learning is not about remembering – it is about creating, exploring new ideas, testing our opinions and beliefs and above all, connecting with others in the process.

Over the next four years of your learning journey at Waratah, our mission is student agency. This means that we will support you to become a confident, creative and engaged learner who explores learning with curiosity, grit, empathy and teamwork (see the Learning Wheel image - right).

This is a transformation of learning. Classrooms are becoming spaces of exploration and discovery. Our Year 7 middle school classrooms are leading the way with this new approach to learning and we are excited to introduce elements of these classrooms into other spaces in our school.

Here at Waratah we are fostering an eco-system of learning that meets the needs of our citizens and our community, which is especially important during times of uncertainty or significant change. This transformation of education comes through building capabilities in our students, our staff, and the community around us.



EXCEL Elective Program

Waratah Campus offers Year 7 students two semester-long elective courses within our Callaghan EXCEL elective program.

This provides you with an opportunity to explore learning in areas of interest and get a taste of subjects and courses studied at later years of high school.

Our electives are designed around an Inquiry Based Learning (IBL) approach that encourages critical and creative thinking by connecting learning experiences to real world questions, problems and challenges.



Overview of school subject areas

The curriculum at Waratah Campus is organised according to the guidelines of the NSW Education Students Authority (NESA). In Year 7 and 8 you will undertake study in the following areas:

- English
- Mathematics
- Science
- Languages other than English (LOTE)
- Human Society and its Environment (History and Geography - HSIE)
- Creative and Performance Arts – Music and Visual Arts (CAPA)
- Technological and Applied Studies (TAS)
- Personal Development, Health, Physical Education (PDHPE)
- Sport

Special and Inclusive Education

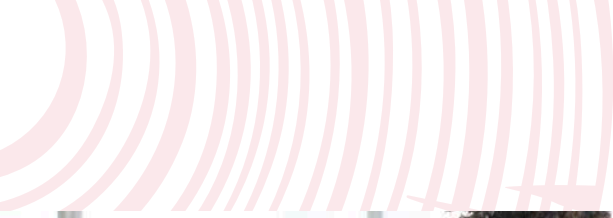
Our Special Education classes cater for students with moderate to high learning and support needs who are likely to benefit from a small class size setting.

Each class has a dedicated teacher, as well as learning support staff. It is a highly supportive learning environment focused on assisting every student to make progress and reach their potential.

Our teaching and learning programs cover an adjusted curriculum to meet the specific needs, goals and abilities of each student. Teachers work closely with families and support professionals to develop Individual Education Plan for each student.

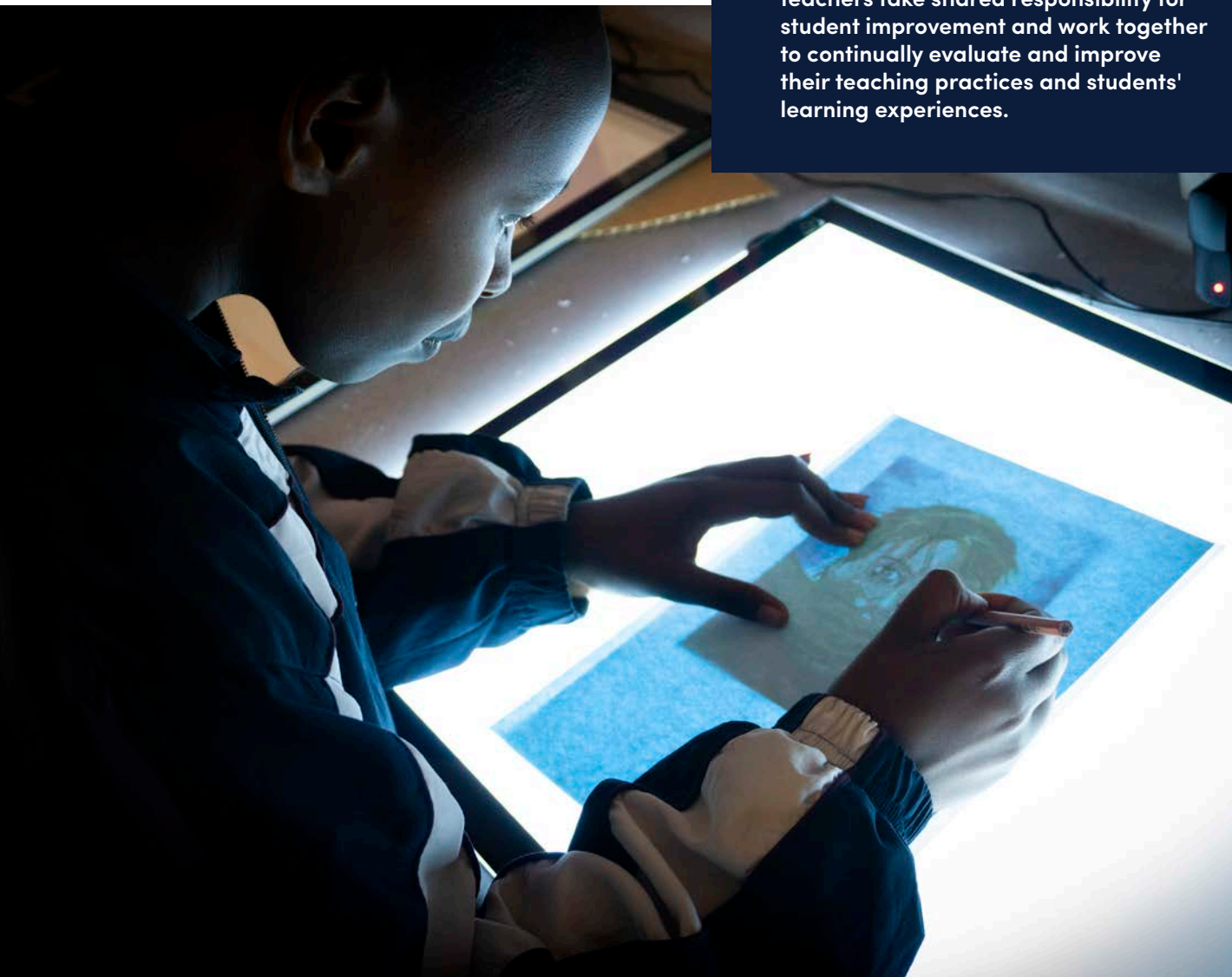
As a student in our Special Education Program, you can also participate in our community access excursions and our campuses' extra-curricular activities

For more information about our Special Education classes please visit our website.



QUALITY TEACHING

We are committed to delivering quality teaching in every classroom, everyday. Our highly skilled and passionate teachers take shared responsibility for student improvement and work together to continually evaluate and improve their teaching practices and students' learning experiences.



Aboriginal Education

Our Aboriginal Education space, the Gunya Room, is set up as a learning hub that provides students with access to:

- learning support from our Aboriginal Learning Support Officers and teachers.
- guest speakers, workshops and classes
- cultural activities and links across the College and community.

The Gunya Room is also available to students during recess and lunch and every student is welcome.

Our Aboriginal Student Support staff work with students and families to develop Personalised Learning Pathways for each of our Aboriginal students. PLPs document your individual academic, cultural and personal goals. We encourage our students to utilise their fortnightly mentoring sessions to work towards these goals.



Joanne Myers
Head Teacher, Inclusion



Darren Woodhouse
Aboriginal Education Officer



Anna Milat
Teacher, Aboriginal Transition and Engagement Centre



Luke Kendall
Head Teacher, Aboriginal Transition and Engagement Centre



Aunty Mel
Student Learning Support Officer



Aunty Robyn
Student Learning Support Officer

English as an Additional Language of Dialect

Our EALD team work with students from a variety of non-English speaking and culturally diverse backgrounds. In our Intensive English Classes (IEC), EALD trained staff work with newly arrived students who require additional, intensive English language support. These classes focus on developing students' speaking, writing and reading skills in English. EALD staff also work with students at higher levels of English in acquiring academic language skills in English for success in the high school curriculum.

Our campus also has Student Learning Support Officers (SLSO) who are bilingual in Arabic, Farsi, Dari, Congolese, Kinyarwanda and Kirundi, helping to support students and families in the transition to school and life in Australia. Our Community Liaison Officer also engages with EALD students and families in connecting to a range of local activities and wellbeing supports in the area



Ms Georgie Gallagher
Teacher, English as an additional language or dialect



Kellie Lane
Teacher, English as an additional language or dialect



Kristie Blais
Teacher, English as an additional language or dialect



Dale Garbutt
Liaison Officer for students and families with English as an additional language or dialect



Lilliane Nkundabantu
Student Learning Support Officer



Oday Shakori
Student Learning Support Officer

Assessments

At high school, we use a number of different ways to monitor our student's progress - from formal state-wide assessments such as NAPLAN and Best Start, to in class tasks, assignments and exams.

Early in term 1 families will be provided with an Assessment booklet which outlines our campus Examination and Assessment Policy, information about how we measure student progress and each faculty's assessment schedule for the year.

It is your responsibility to check your assessment schedule. It will tell you how and when you will be assessed.

Families can also view assessment tasks and teacher feedback via the secure online learning platform, Canvas Parents. You will receive more information about connecting to this platform during the Year 7 Parent Information Evening.

Assessments are ongoing in Year 7 and can take many forms. Their primary purpose is to improve student learning.

Assessment for learning

Teachers use this form of assessment as an inquiry tool to find out as much as they can about what their students know and can do, and what confusions, preconceptions, or gaps they might have. Assessment for learning occurs throughout the learning process.

Assessment as learning

Assessment as learning occurs when students are their own assessors. Students monitor their own learning, ask questions and use a range of strategies to decide what they know and can do, and how to use assessment information to inform their learning goals.

Assessment of learning

Assessment of learning assists teachers in using evidence of student learning to assess achievement against outcomes and standards. Sometimes referred to as 'summative assessment', it usually occurs at the end of a unit of work, term or semester, and may be used to rank or grade students.



Progress reports

Callaghan College Waratah Campus has three formal methods of reporting on your progress

1. Interim reports: these are issued towards the end of Term 1. They provide a general overview for your parents and carers of how you are performing.
2. School reports: issued at the end of Terms 2 and 4. These reports provide a comprehensive summary of your progress for Semester 1 and Semester 2. Reports are posted online on the Sentral Parent Portal.
3. Parent/Teacher interviews: held at the beginning of Term 3. This provides an opportunity for your parents or carers to meet with individual teachers to discuss your progress. You are welcome to attend these interviews as well.

PARENTS DIRECT ACCESS TO SCHOOL REPORTS

As a parent or carer, you can access your child's reports, view your child's timetable and book formal parent teacher interview slots via a secure online platform called Sentral Parent Portal.

We have introduced interim reports in response to parent feedback requesting earlier indications of how their child is travelling in Year 7.



Support for learning

Introducing our Learning and Support Team

Our Learning and Support Team works closely with teachers, students, parents and outside professionals to cater for the individual support needs of students.

Services provided by our learning and support team include:

- Assessment of student learning needs
- Targeted intervention programs e.g. literacy, numeracy, organisational skills
- In-class support
- The development of individual learning plans
- Emotional and behaviour intervention and support groups
- Advice for accessing internal and external professional support services
- Determining appropriate adjustments, including the modification of curriculum, assessment and exams
- Determining appropriate extension programs
- Determining appropriate extension programs for high achieving students
- Transition programs
- Professional development sessions to enhance teacher skills and understanding.



Supporting your child – tips for parents:

Waratah Campus is fully inclusive and every student is supported to achieve their greatest potential. Learning progression in high school differs slightly from primary school and it is normal for new Year 7s to feel a little overwhelmed initially as they adjust to these changes.

If your child is struggling or has concerns about their learning we encourage you to address these concerns early. Start with a conversation with your child – find out what they find challenging and what would make a difference for them.

We also encourage you to contact your child's Classroom Teachers and/or Year Advisors for support. Our Learning and Support Team are here to help for more complex issues, such as learning or wellbeing difficulties, diagnosis and/or disability.

If you would like to know more, or to provide additional information to assist us in meeting your child's individual learning and support needs, please contact me for an appointment.



Aspire and Opportunity Classes

These programs are designed for students who have advanced learning capacity for their age. It provides targeted, specialised programs to ensure high achieving students reach their educational potential.

Applications into these programs are made when students are in Year 6. For more information about these programs contact our Head Teacher, Teaching and Learning.

Middle School

Middle School provides a highly supported transition to high school for all mainstream Year 7 students. We ease students into the complexity of a secondary school timetable by reducing the number of teachers delivering content and by assigning a home classroom for each Year 7 class.

You will have 1-2 teachers for your core subjects: Mathematics, Personal Development, Health and Physical Education, English and Human Society and Its Environments (History and Geography). These lessons will all take place in your class's home classroom. Science, Technological and Applied Studies (TAS), Music, Visual Arts and your EXCEL electives will be delivered in specialist rooms by a range of teachers.

Reducing the number of teachers and minimising movement around the school has a marked effect on reducing student anxiety and helps build stronger relationships at a class level.

Numeracy and literacy support

Our school's numeracy and literacy support groups aim to build students' confidence to learn more independently in the classroom. The groups are facilitated by specialist Learning and Support teachers and focus on reading fluency and comprehension, writing and numeracy strategies.

Our school's growth data from Year 7 Best Start to Year 7 NAPLAN and Year 9 NAPLAN is well above state average and indicates that these small group learning support programs are highly successful.

Note for parents

If your child is identified as requiring this extra support you will be contacted at the start of the school year to discuss this program.

Getting involved in school life

Co-curricular activities develop skills and build confidence

We encourage you to participate in our school's extra activities – they help you to develop a variety of skills, build personal confidence and foster friendships within our school community.

Throughout the school year, there are a number of co-curricular activities that are available to get involved in. These include:

- Student Leadership
- School sport and representative sport
- Bands and vocal groups
- Art club and drama activities
- Musical theatre
- Debating and public speaking
- Circus skills
- Lunch time clubs including chess, manga, Minecraft and Dungeons and Dragons.

Listen out to Daily Notices in morning roll call for more information about lunchtime clubs and other extra-curricular activities.

Opportunities to lead

Our Student Representative Council (SRC), Aboriginal Student Leadership team and EALD Student Leadership team are the main student representative bodies at our campus. The SRC is made up of our four Year 10 School Captains and 4 representatives from each of the other Year groups (7-9) and the Aboriginal Leadership and EALD Leadership teams consist of self-nominating students.

Our student leaders are responsible for working on projects across the school, leading school assemblies, representing the school at community events, providing peer support, visiting partner primary schools and putting forward views and ideas to influence school decision making.

If you have a passion for leadership, we encourage you to nominate yourself for a leadership role during term 4.





Opportunities to perform

Being part of Callaghan College provides our Waratah Campus students with even more opportunities, as the school invests in a number of events each year to showcase our students' talents from across all three campuses.

Variety Nights, as well as collaborations with our partner primary schools, provide ample opportunities for our performers, including our College Stage and Concert bands.

The College is also invited to participate in a number of community events – including Star Struck, School Spectacular, Hunter Dance Festival, and more.



Getting involved in sport

Sport opportunities on campus

Callaghan College provides sport activities for students across all ability levels.

The program is designed to be inclusive and all students are encouraged to participate.

Year 7 weekly sport

The weekly sport program consists of a double period every Wednesday. You will have the opportunity to choose your recreational or sport activity each term from an array of on-site or off-site options. Some of the off-site options include trampolining, ice skating, laser tag, ten pin bowling, putt putt golf and fitness training.

Semester 1 runs as a rotational program that allows students to participate in an array of recreational and sporting activities. In Semester 2, students choose from a variety of onsite and offsite options.

Please note that choosing an off-site sport option involves additional venue and transport fees.

Representative sport

For students interested in competitive sporting activities, there are a number of opportunities:

- Hunter Region Trials – for high achieving athletes. You can attend trials for selection into Hunter Region teams for a number of sports

- Carnivals – College carnivals are held for swimming, athletics and cross country, giving you an opportunity to progress to Zone.
- Knock out competitions and Gala Days – Callaghan College Teams compete in Open competitions across a range of sports. Year 7s can aspire to be involved as you progress through the College. If you are interested, listen out for 'Under 15s' competitions announced at the assembly.

Touch base with the Representative Sport Coordinator in term 1 to let her know your sporting interests. It is important to listen out for the Sports Report at assembly to ensure you don't miss upcoming sporting opportunities.

Breaktime Sport Competition

You and your friends can take on the staff and other student teams in our Breaktime Sport competition. This is held during some recess and lunch breaks, with different sports each Term. Listen out to Daily Notices in morning roll call for more information.

House Groups

You will be in a House group for sporting and other competitions. This is based on the first letter of your surname.





MAKING SURE YOU DON'T MISS OUT ON REPRESENTING THE SCHOOL

It is a privilege to represent the school, and students must be able to demonstrate that they are able to meet our code of conduct requirements. Our Code of Conduct agreement must be signed before a student can participate.

This agreement includes a number of student responsibilities relating to attendance, behaviour and completion of school work. The agreement is included in your Orientation Pack and can be found on our website.



Wellbeing

Student wellbeing is an integral part of everything we do

We know that young people learn best when they are healthy, safe, connected and engaged.

Our aim is to support our students to connect, succeed and thrive at each stage of your development and learning. We have a whole school approach to wellbeing and engagement that includes curriculum, teaching and learning strategies, policy and support services.

Our Year 7 Wellbeing program is all about empathy, influence, and teamwork. It includes:

- High School Transition, Connection Point and Middle School programs – providing you with a highly supported transition to high school.
- Student wellbeing seminars – teaching you about digital safety and citizenship, respectful relationships, school processes for preventing and addressing bullying and more.
- Peer Support Program – students helping students. Our Peer Support Leaders are available to assist you to settle in and feel a sense of belonging at Waratah Campus.

We also have a number of wellbeing programs that are more targeted, including:

Capoeira Angola

In partnership with STARTTS, the school delivers a weekly Project Bantu Capoeira Angola Program to students from refugee and migrant backgrounds. Project Bantu aims to improve physical fitness, encourage teamwork, promote positive social interaction and boost self-esteem for participants, many of whom are facing unique challenges in integrating into a new culture, community and school.

BroSpeak and SistaSpeak Program

Supports our Aboriginal students to explore, nurture and value their cultural identity, traditions and family connections through participation in cultural and community engagement activities, excursions and projects. These programs are facilitated by teachers, our Aboriginal student support staff and invited guests from our Aboriginal community.

RAP-A for Adolescents

Facilitated by our Student Support Officer (SSO), this small group program aims to build resilience and promote positive Mental Health in teenagers. Speak to a member of the Wellbeing team for more information.

Shine, Crown, Rage and True Grit

Facilitated by our Student Support Officer, these small group programs cover self-worth, emotional regulation skills and healthy, respectful masculinity.





Who is available to support me?

Our Wellbeing Team is a network of people who can help you with your wellbeing needs.

Year 7 Advisors

Your Year 7 Advisors are advocates for Year 7 students, assisting you to settle into high school life and to make the most of all the opportunities available at Callaghan College. They are your first point of contact if you are experiencing problems at school. They can also connect you to other specialist support services available at school.

Head Teacher Wellbeing

Our Wellbeing Head Teacher coordinates our whole school wellbeing program, liaises with external service providers and ensures all students are given a voice and are listened to. Feel free to contact our Wellbeing staff about any personal, social, financial, wellbeing or academic concerns.

Counsellors

Our School Counsellors are available most school days and can be found in our Administration Building. They are available to talk to students and their families, providing advice when coping with personal, family and academic problems.

If you want to meet with one of our School Counsellors, please leave your name with the Administration Office staff and our counsellors will contact you to confirm an appointment time. Your parents can also make a referral by contacting the school.

Student Support Officer (SSO)

Our SSO supports the implementation of our whole school Wellbeing program, helping students develop social and emotional skills through targeted, strengths-based programs and strategies that build resilience, coping skills and positive relationships. Visit our Wellbeing Hub to make an appointment or to enrol in a small group program.

Careers Advisor

Our Careers Advisor provides advice about career planning, transition to the Senior Campus and elective choices. You can drop into the career office in the library during break times, or book an appointment for another time.

School values and beliefs

Our school values and beliefs help our students create the best version of themselves.

Empowering self

We own our own choices and behaviours. We take credit when we do well and take responsibility when we don't. We participate in safe and healthy behaviours, building our resilience to be the best version of ourselves.

Valuing others

We know that positive relationships make us stronger and better as individuals and as a community. We do everything we can to nurture and protect these relationships. We actively work to create safe and secure environments in the school, respect and advocate for others and

contribute to the culture of the school through being part of a team and building our school spirit.

Agency in learning

We understand that learning is a process that encourages success and aspiration in our lives. We contribute to deeply engaged classrooms and are deeply connected to our learning, helping to create a vibrant learning culture where confident and creative learners thrive.

Parents can view positive student acknowledgements from staff on the Sentral Parent Portal.



Assemblies

Assemblies occur each Wednesday after roll call.

They are a wonderful opportunity to come together as school or year group, recognise student achievement and celebrate special days in our school's calendar.

TERM 1		TERM 2	
Week 1	Year Group Meetings	Week 1	Whole School – ANZAC Assembly
Week 2	Whole School – Welcome	Week 2	Whole School – SRC and Leadership Team introduction
Week 3	Whole School – Apology Day	Week 3	Whole School – Mothers Day
Week 4	Whole School – Harmony Day	Week 4	Whole School – Walk to School
Week 5	Year Group Meetings	Week 5	Year Group Meetings
Week 6	Year Group Meetings	Week 6	Whole School – Reconciliation Week
Week 7	Whole School – Pi Day	Week 7	Year Group Meetings
Week 8	Whole School – Action Against Bullying	Week 8	Year Group Meetings
Week 9	Year Group Meeting	Week 9	Whole School – Refugee Week
Week 10	Whole School – Easter Draw	Week 10	Whole School – NAIDOC Week
TERM 3		TERM 4	
Week 1	Year Group Meetings	Week 1	Year Group Meeting
Week 2	Whole School – Welcome back	Week 2	Whole School – Welcome back
Week 3	Year Group Meeting	Week 3	Whole School Assembly
Week 4	Whole School – R U OK?	Week 4	Whole School – Teacher's Day
Week 5	Whole School – Science Week	Week 5	Whole School – Remembrance Day
Week 6	Whole School – Book Week	Week 6	Whole School – White Ribbon
Week 7	Whole School – Fathers Day	Week 7	Whole School – Captain speeches and voting
Week 8	Whole School – World Literacy Day	Week 8	Whole School – Movember
Week 9	Whole School	Week 9	Year Group Meeting
Week 10	Whole School – Oktoberfest	Week 10	Whole School – Gotcha Draw

Getting in touch

Deputy Principals



Mrs Michelle Maher
Deputy Principal (Year 7)



Mr Lindsay Morrow
Deputy Principal (Years 8)



Ms Nicole Avard
Deputy Principal (Year 9 and 10)



Mr Jeff Bull
Deputy Principal Inclusive
and Special Education

Learning Key Contacts cont.



Ms Ashlea Beavan
Head Teacher, Transition and
Engagement



Ms Eunice Hsu
Teacher, Learning
and Support



Ms Renae Simmons
Teacher, Learning
and Support

Refer to page 17 for our EALD and Aboriginal Education
key contacts.

Learning Key Contacts



Ms Margo Bowen
Head Teacher, Teaching
and Learning



Ms Lisa Panozza
Head Teacher, Teaching
and Learning



Ms Karen Allen
Head Teacher Administration
(timetables)



Ms Joanne Myers
Head Teacher, Inclusion

Year 7 Wellbeing Contacts



Mr Chris Ellul
Year 7 Advisor



Ms Anna Milat
Year 7 Advisor



Ms Louise Payne
Head Teacher, Wellbeing



Ms Mel Griffin
Student Support Officer



Administration Office

02 4968 1939

School office is open 8am–3:30pm
waratah-h.school@det.nsw.edu.au

Sports Contacts



Ms Kerrie Bradley
Representative Sport Coordinator



Mr Nick Goodfellow
Year 7 Weekly Sport Coordinator

Faculty Head Teachers



Ms Wendy Davis
Head Teacher, English



Mr Tristan Densham
Head Teacher, Mathematics



Dane Hockley
Head Teacher, Science



Ms Sheena Roberts
Head Teacher, Human Society and its Environment (HSIE)



Mrs Yvette McShane
Head Teacher, Human Society and its Environment (HSIE)

Faculty Head Teachers cont.



Mr Brent Scrivener
Head Teacher, Technological and Applied Studies (TAS)



Mr Dan Mani
Head Teacher, Creative and Performing Arts



Mrs Allison Blight
Head Teacher, Personal Development, Health and Physical Education (PDHPE)

Community Engagement



Mr Darren Woodhouse
Aboriginal Student Support Officer



Mr Dale Garbutt (Mon & Thur)
Liaison Officer for students and families with English as an additional language or dialect (EAL/D)



Ms Helen Thomas
Community Engagement Officer



Mr Nathan Griffin
Community Engagement Officer

Parent information

Our school encourages families to be actively involved in their children's education. We know from research that when schools and families work together, students benefit.

We work hard to establish and maintain effective channels of communication with families so you know how your child is going at school and how you can get involved in school activities. For a summary of our school's communication channels see the next page.

We encourage parents and carers to stay in touch so we understand how we can best cater for your child's learning needs.

What can families expect of the school?

When you contact the school, you can expect us to respond respectfully, sensitively and as efficiently as is practical. We will maintain confidentiality where appropriate, releasing information on a "need to know basis" to staff. If you have a specific request regarding the extent of access to information you provide, please make that request known at the time of contact.

When you call the school, our Administrative Office staff will ensure your enquiry is forwarded to the most relevant staff member. Please be aware that teachers cannot leave classes to receive or return calls or conduct interviews.

What does our school expect of parents and carers?

- Please direct your concerns to the appropriate staff member as outlined in the flow charts. If you're unsure, our Administration Staff can direct you to the right person.
- Make an appointment in advance when seeking a face to face meeting with staff
- Approach matters in a calm and respectful manner
- Provide contact details so we can call or email you as efficiently as is practical
- It is helpful if you can communicate any extremely important matter in writing to ensure all details can be fully understood

- Only contact staff members during office hours (Monday – Friday, 8:30am – 3:30pm). Please refrain from contacting staff on their mobile phone outside these hours.

Who to contact?

The guide below shows our process in which to direct specific issues relating to your child.

While it may seem quicker to go to the higher authority, it is usually more appropriate to start with the person who knows the student or the details of the incident best. It progresses to the next level only if the matter cannot be resolved.

ACADEMIC LEARNING ISSUES

Please follow this pathway of contacts;

↓ Class Teacher

↓ Faculty Head Teacher

↓ One of our Learning Key Contacts:

- Assessments - Head Teacher, Teaching and Learning
- Technology - Technology Coordinator
- Additional needs - Head Teacher Learning and Support

↓ Deputy Principal (Year 7)

→ Principal

WELLBEING ISSUES

↓ Year 7 Year Advisor

↓ Head Teacher Wellbeing

↓ Deputy Principal (Year 7)

→ Principal



Keep up to date

Our school's communication channels to parents and carers

Website <p>The official communication hub for our school, it is your point of access to all our communication channels for students and parents.</p> <p>View our school news, our calendar of school events, find out general information about the campus and make payments.</p> <p>waratah-h.schools.nsw.gov.au</p>	SMS <p>We send SMS text messages to your primary contact number to communicate reminders or important notifications (e.g. sporting event cancellations due to wet weather).</p> <p>SMS is also used for student attendance. You will receive an SMS from the school if your child is absent or running late for morning roll call. Simply reply to this message to explain their absence.</p>	Social Media <p>We regularly post highlights of student achievements and learning, and information about upcoming whole school events on our social pages. These pages are monitored during school hours only.</p> <p>Families can also follow our Science Faculty Instagram page.</p> <p>Facebook: ccwaratah Instagram: ccwaratah Instagram science@ccwtc</p>
Newsletter <p>Waratah Campus News is our Campus Newsletter. It is emailed to our whole school community twice a Term.</p> <p>You can also access it on our website.</p>	Sentral Parent Portal <p>Sentral Parent Portal is a secure online platform that provides parents with access to student timetables, attendance information, School Reports and daily notices from teachers to students.</p>	Canvas Parents <p>This secure digital platform connects you to information about your child's learning, including task due dates, assessment grades and teacher feedback.</p>
Face-to-Face <p>There are many opportunities for parents and staff to meet throughout the year. These include information evenings and Parent Teacher Interviews. Parents are also welcome to phone the school to make an appointment with staff.</p>	REMEMBER TO KEEP YOUR CONTACT DETAILS UP TO DATE <p>Most of our communication to you is done initially via your nominated primary email address, so it is essential to keep this up to date. You can update your primary contact email at any time by emailing, or phoning our Front Office staff.</p> <p>Phone: 02 4968 1939 Email: waratah-h.school@det.nsw.edu.au</p>	

We now send almost all our permission notes for excursions and sport activities via email (through School Bytes). So make sure you check your emails regularly so your child doesn't miss out on an excursion.

Frequently asked questions

WHAT DO I DO IF...

I am late to school?

If you arrive after the bell at 8:50am go straight to the Administration Office and swipe in with your Student ID card. You will be given a late note which you take to your class. Parents/Carers are required to write a note to explain the reason for lateness.

I feel sick at school?

Inform your teacher and they will write you a note to go to the Administration Office. If you are too unwell to be at school, the Administration staff will contact your Parents/Carers to come and pick you up. Please do not phone your parents from your mobile to arrange to be picked up as it's important you get signed out at the Office before you leave.

I need to take prescribed medications at school?

Ask our Administration Office staff for a Request to Administer Prescribed Medication at School Form. Your parents/carers must sign and complete this form detailing what medication you require, the dosage and the times of the day you need to take this medication. Please return the completed form with the medication to the Administration Office. Medication must be in original packaging with your name and dosage required clearly labelled.

Paracetamol or any other analgesics cannot be dispensed at school, unless prescribed by a Doctor.

I feel sick at home in the morning?

Please stay home to rest and recuperate, this will also prevent illness spreading at school. Your parent or carer will need to inform the school of your absence via a text message, phone call, email or letter on your return to school.

I lose my timetable?

Go to the school website and access your student portal. This will allow you access to your timetable.

I get lost at school?

Any teacher will help you, ask other students or make your way to the Administration Office for assistance.

I need to leave early?

Bring a note from your Parent/Carer and take it to the Administration Office before school. You will be given an Early Leavers pass to show your teacher at the time you need to leave.

I lose something at school?

Check to see if it has been handed in at the Administration Office. If something valuable has been lost or stolen, tell your Year Advisors or Deputy Principal.

I am not in correct uniform?

You will be lent a school uniform for the day. Go to Uniform Check during roll call after your name is marked. This is usually located at the back of the hall during roll call. If roll call is in another location, go to the Uniform Clinic that is situated near the Administration Office to borrow a uniform to wear. You will need to return the borrowed uniform at the end of the day.

I am late for class?

If you are delayed by a previous teacher, ask them for a note explaining your lateness. Unexplained lateness will result in time made up during break times.

I need to go to the toilet during class time?

Ask your class teacher for permission. If your teacher gives you permission, they will give you a note or "out of class pass". You will need to sign in at the front office to access the toilet. It is preferred that you try and go to the toilet during break times.



How do I order from the Canteen?

Fill in and pay for your order before school at the canteen. The canteen staff can assist you.

To collect your order, simply come to the back door of the canteen during recess or lunch. Pre-ordering saves you lining up and ensures you get the food you want.

I cannot do PE due to illness or injury?

Bring a note from your Parent/Carer and give it to your teacher at the beginning of the lesson.

I can't finish an assignment or homework task on time?

Talk to your teacher, explaining the reason you require an extension. We encourage you to have this conversation well before the task due date. You should also bring a note from your Parent/Carer supporting your request. The policy guidelines regarding extensions are outlined in the front of your Assessment Schedule Book which you will receive in Term 1.

If I get injured at school?

Our Administrative Office staff treat students with minor injuries. More serious injuries are referred to medical personal. Contact will be made with your parents should you need to go home or require urgent medical attention. Our Deputy Principals or Principal are also informed of all accidents occurring at school.

What are the rules for mobile phones?

Mobile Phones should only be brought to school if absolutely necessary. They need to be kept on silent and in your bag or locker during class time. As with other personal belongings, your phone is your responsibility. Phones that are misused will be confiscated and returned at the end of the school day.

If I am being bullied?

Bullying is never ok. We have active policies and procedures that are used to safeguard all our students. Please speak to a trusted teacher or your Year Advisor as a starting point.

HOW DO I REQUEST LEAVE FROM SCHOOL FOR MY CHILD (when they are not sick)?

NSW Government Legislation does not allow for absences during Term time. Applications for leave in exceptional circumstances should be made in advance to the Principal. For unforeseen absences, it is recommended that Parents/Carers phone to inform the school.

ARE THERE ANY SCHOOL FEES?

Parents and carers are asked to pay a small general contribution to support the programs offered at the Campus. The general contribution funds are used to purchase library books, offset the cost of printing, and for additional learning resources. These can be paid in person at our Administration Office or online via our website. EFTPOS is available.

COMPULSORY ELECTIVE SUBJECT FEES

Certain elective subjects have additional costs that are charged as separate fees. This covers the additional cost of resources for these subjects. Students are informed before they choose these electives, so that you have a chance to consider the financial commitment associated with these subjects.

HOW DO I MAKE SCHOOL PAYMENTS?

Payments can be made online via the school website, or in person at our Administration office. EFTPOS is available onsite.

Reading your timetable

You will receive your timetable when you start Year 7. It will look similar to the sample timetable over page and will cover a ten-day cycle – Week A (Day 1 –5) and Week B (Day 6 – 10).

When reading your timetable, it is important to check the day of the cycle, period of the day, subject code, name of teacher and room number.

We recommend you print off several copies of your timetable – one for you to carry with you each school day, one for your fridge at home so your family know what’s going on and one for your home study space.

You can also access a digital version via Sentral. Your teachers will show you how to use Sentral when you start at Waratah.

Subject Name

Room Number

TD = Tech Drawing
Room 2

Examples:

M2 = Music Room 2
L2 = Lab 2
Sport = No room
HALL 2 = is the Hall
K1 = Kitchen 1

Design & Technology Yr7
(7TD204)

Room: TD2

Mr Brent Scrivener

Your Teacher’s
Name

PLEASE NOTE: If you have a blank period on your timetable, please see our Head Teacher Administration, Ms Karen Allen. Her office is next to the Principal’s Office in our Administration building.

Test your timetable reading skills with this quiz:

1. What subject does John have in period 4 on Friday week 1?
2. What room does John need to go to for Music on Tuesday week 2?
3. On which floor will John find his room for Languages? (clue: check the map on the inside back cover of this booklet)
4. Why is there no room number on John’s timetable for periods 1 and 2 on Wednesdays?

Answers: 1. Science 2. M1 or Music Room 1 3. Ground floor 4. John has external sport. He will be travelling to the beach. His teacher will notify him of a meeting point.



Timetable for John Citizen

	D1		D2		D3		D4		D5	
Roll Call					8:50-9:00					
Assembly					Roll Call	MCDM 31				
					9:00-9:30					
					Roll Assembly	HALL 1				
Period 1	8:50-10:05		8:50-10:05		9:30-10:30		8:50-10:05		8:50-10:05	
	Mathematics	LENT 31	Tech Mandatory	CAMA MW2	Sport Beach Activities	KNIC	English	MCDM 31	Mathematics	LENT 31
Period 2	10:10-11:25		10:10-11:25		10:30-11:30		10:10-11:25		10:10-11:25	
	Language Yr 7	STAJ 12	Music Yr 7	MAND M1	Sport Beach Activities	KNIC	Music Yr 7	MAND M1	PDHPE	LENT 31
Break 1	11:25-11:55		11:25-11:55		11:30-12:00		11:25-11:55		11:25-11:55	
Period 3	11:55-13:10		11:55-13:10		12:00-13:00		11:55-13:10		11:55-13:10	
	HSIE	MCDM 31	English	MCDM 31	Science	ELLC 31	Science	ELLC 31	English	MCDM 31
Break 2	13:10-13:40		13:10-13:40				13:10-13:40		13:10-13:40	
Period 4	13:40-14:55		13:40-14:55		13:00-14:00		13:40-14:55		13:40-14:55	
	Tech Mandatory	CAMA MW2	Excel Fashion & Food	KEND TEX1	Mathematics	LENT 31	PDHPE	LENT 31	Science	ELLC 31

	D6		D7		D8		D9		D10	
Roll Call					8:50-9:00					
Assembly					Roll Call	MCDM 31				
					9:00-9:30					
					Roll Assembly	HALL 1				
Period 1	8:50-10:05		8:50-10:05		9:30-10:30		8:50-10:05		8:50-10:05	
	Language Yr 7	STAJ 12	Music Yr 7	MAND M1	Sport Beach Activities	KNIC	English	MCDM 31	Language Yr 7	STAJ 12
Period 2	10:10-11:25		10:10-11:25		10:30-11:30		10:10-11:25		10:10-11:25	
	Mathematics	LENT 31	Excel Fashion & Food	KEND TEX1	Sport Beach Activities	KNIC	Music Yr 7	MAND M1	Science	ELLC 31
Break 1	11:25-11:55		11:25-11:55		11:30-12:00		11:25-11:55		11:25-11:55	
Period 3	11:55-13:10		11:55-13:10		12:00-13:00		11:55-13:10		11:55-13:10	
	Tech Mandatory	CAMA MW2	HSIE	MCDM 31	Language Yr 7	STAJ 12	Excel Fashion & Food	KEND TEX1	HSIE	MCDM 31
Break 2	13:10-13:40		13:10-13:40				13:10-13:40		13:10-13:40	
Period 4	13:40-14:55		13:40-14:55		13:00-14:00		13:40-14:55		13:40-14:55	
	Science	ELLC 31	PDHPE	LENT 31	Mathematics	LENT 31	Tech Mandatory	CAMA MW2	English	MCDM 31

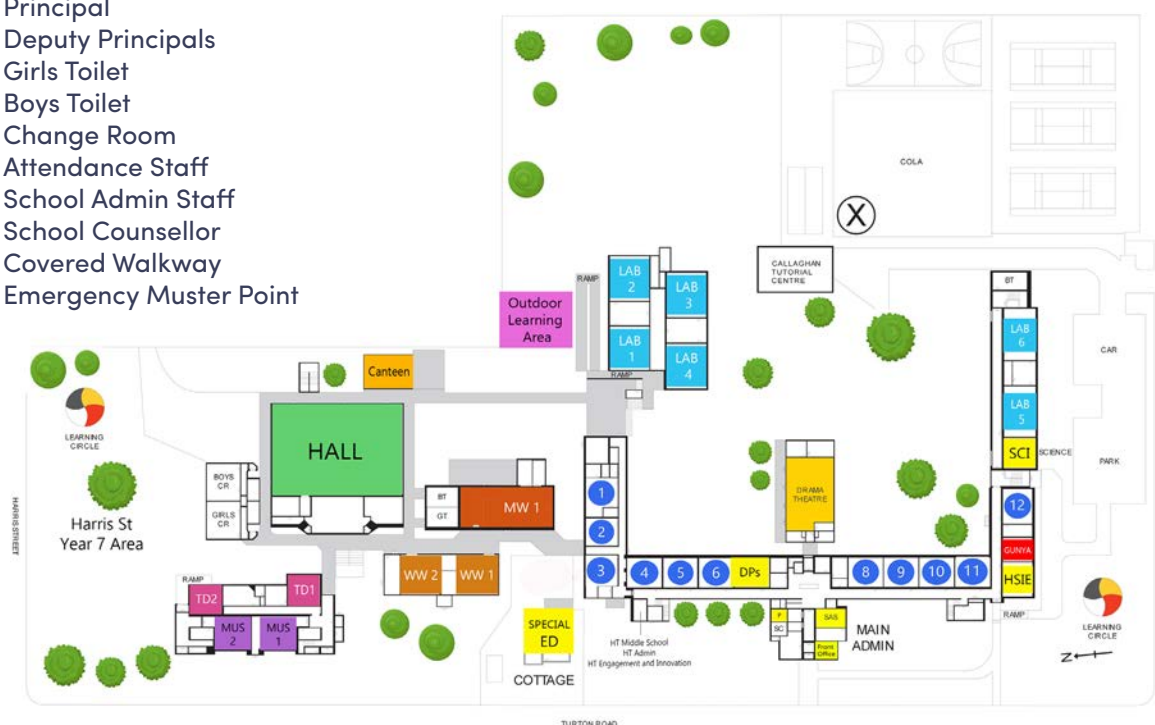


School maps

Ground Floor

Legend

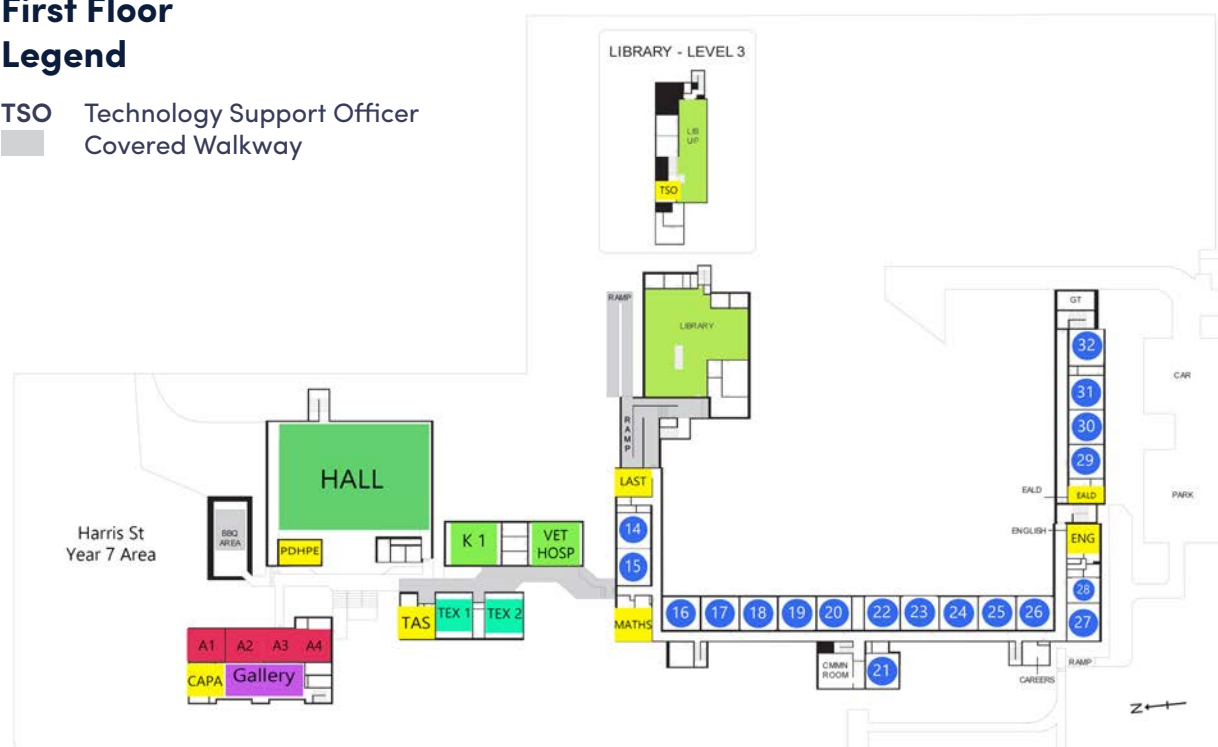
- P Principal
- DP Deputy Principals
- GT Girls Toilet
- BT Boys Toilet
- CR Change Room
- AS Attendance Staff
- SAS School Admin Staff
- SC School Counsellor
- Covered Walkway
- X Emergency Muster Point



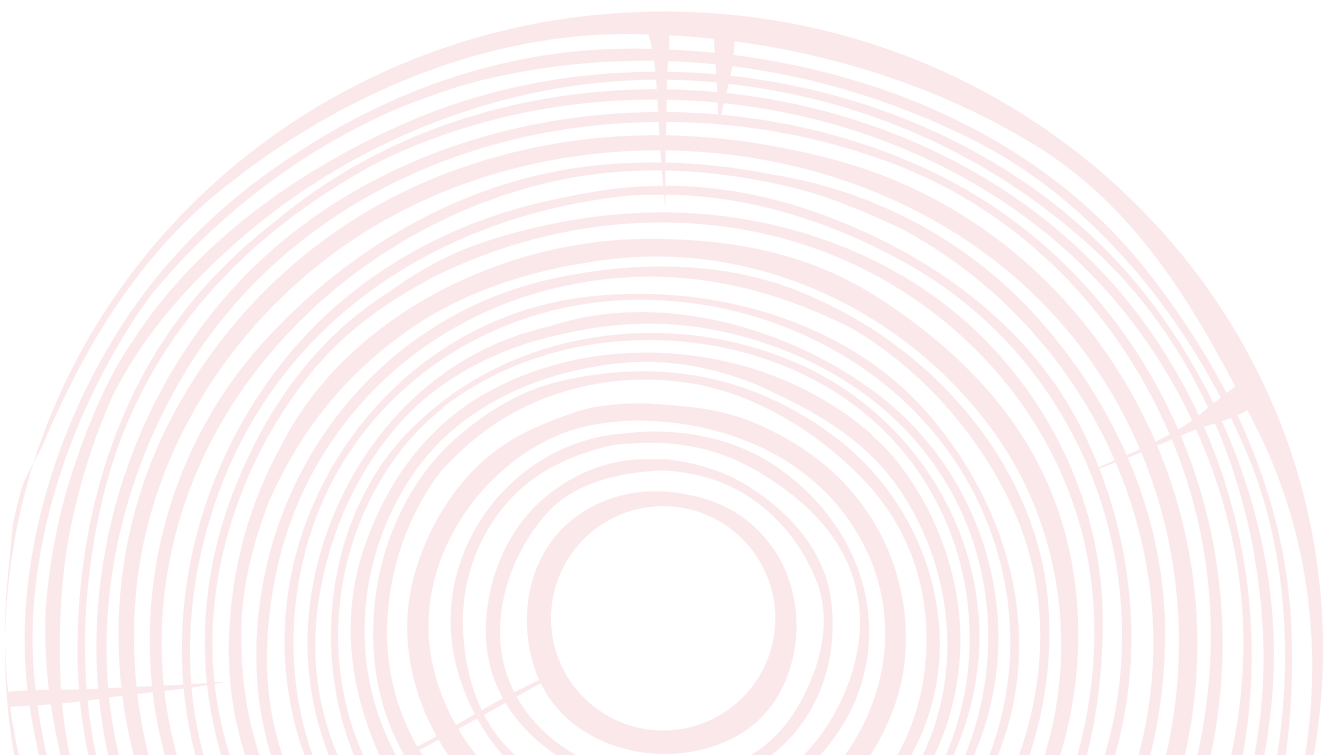
First Floor

Legend

- TSO Technology Support Officer
- Covered Walkway

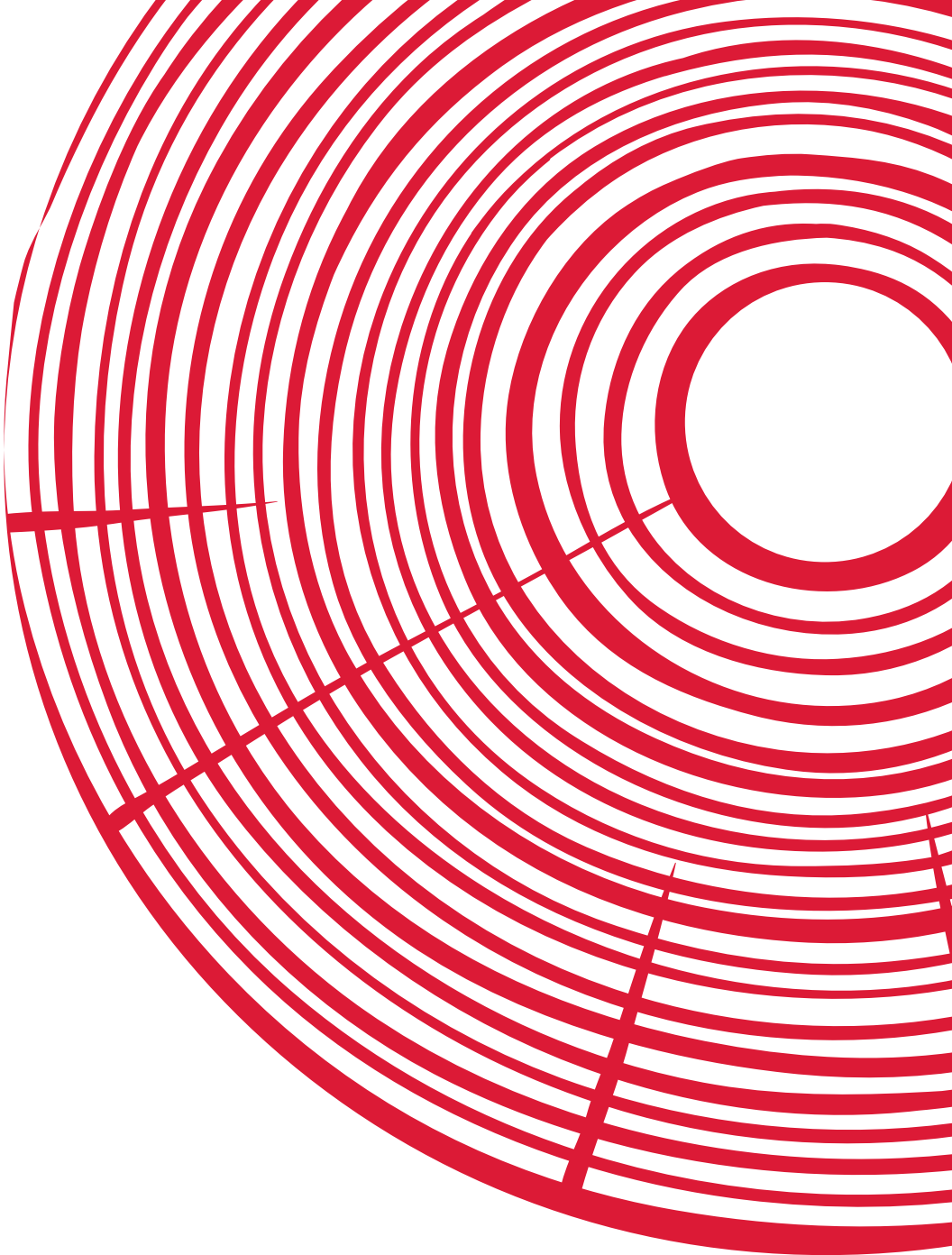


Notes



Notes





**Collaborating to
empower learners**

Turton Road
Waratah NSW 2298

02 4968 1939

waratah-h.schools.nsw.gov.au